



# Al Gharbia Overview

The Western Region of Abu Dhabi Emirate

Abu Dhabi, November 2010



# Content



Al Gharbia Overview

Western Region Development Council Vision

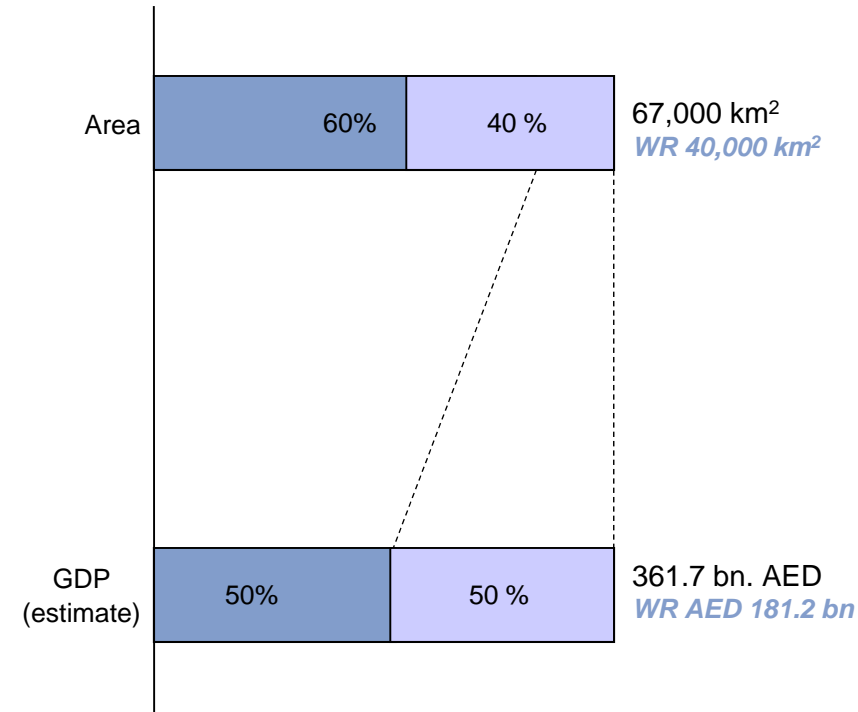
Plan “Al Gharbia 2030”

Development Projects

How Can We Help



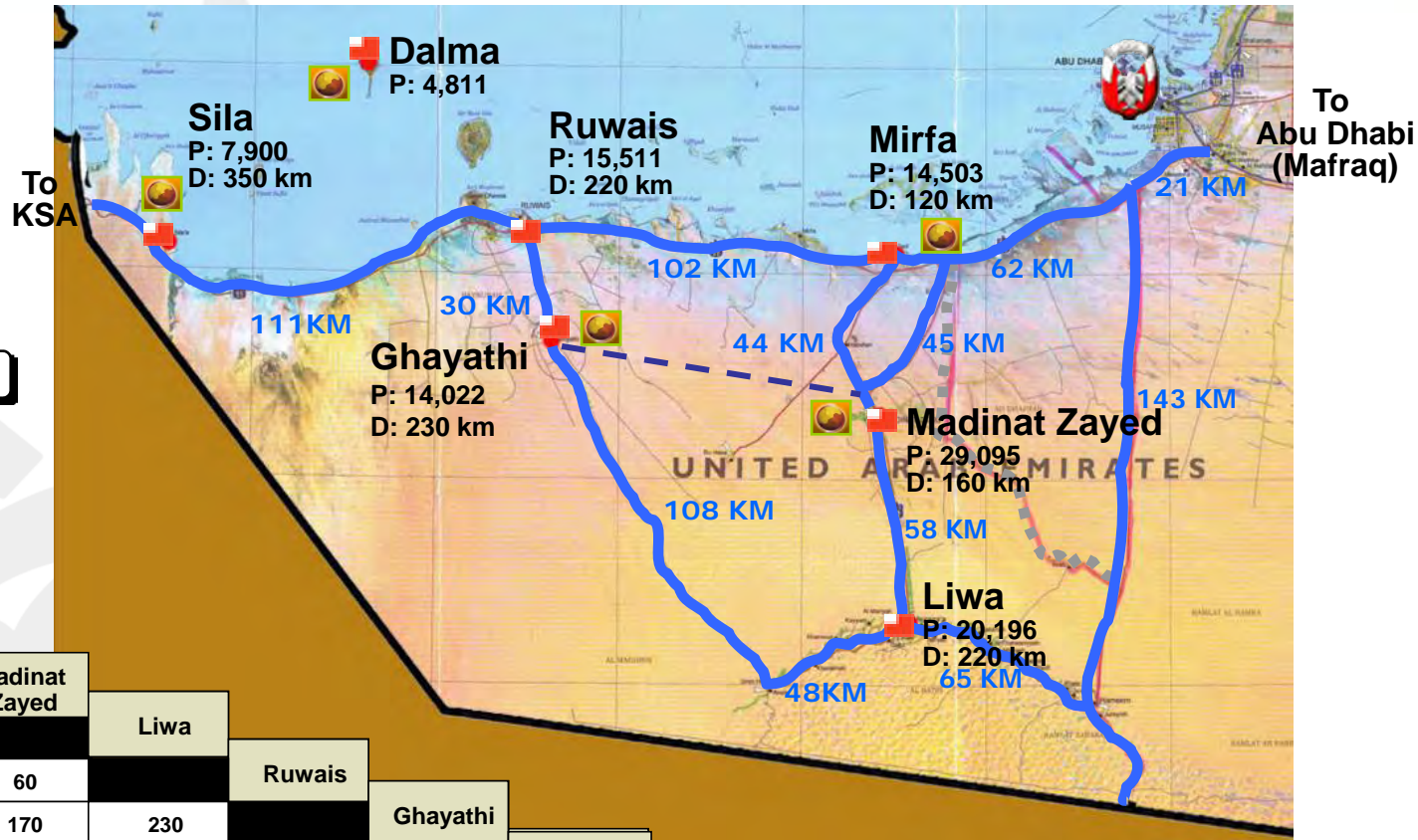
# Al Gharbia covers app. 60 % of the total area of the Emirate of Abu Dhabi, contributing to more than 50 % of its GDP



Source: Abu Dhabi National Census 2005 ; Abu Dhabi Statistical Yearbook 2005

Source: Area: Abu Dhabi Municipality;  
GDP: Abu Dhabi Chamber of Commerce & Industry; GDP (WR) est. 90 % of the AD Oil Sector GDP

# The seven main cities of Al Gharbia with TAMM network for quick provision of basic public services to residents

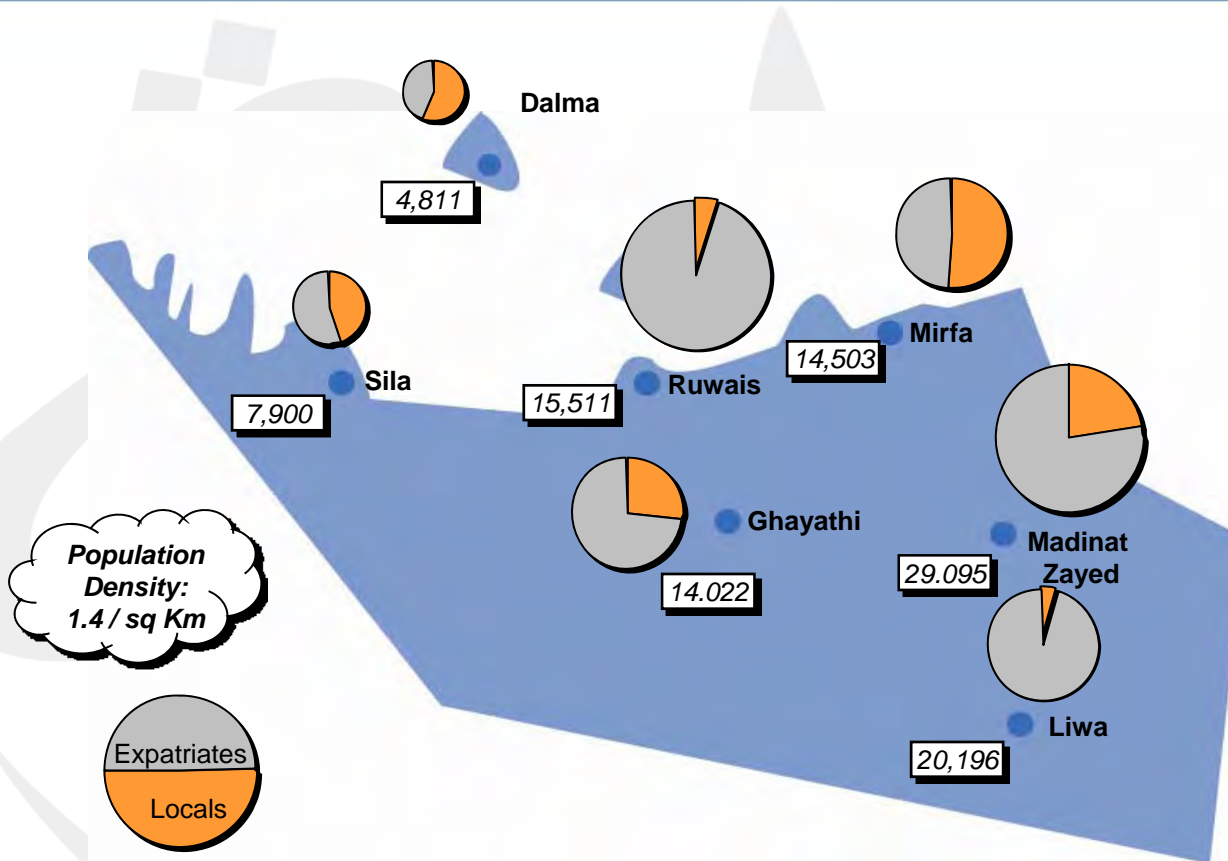


## Distance (km)

	Abu Dhabi	Mirfa	Madinat Zayed	Liwa	Ruwais	Ghayathi	Sila
Abu Dhabi	-	120	160	220	200	230	350
Mirfa	120	-	90	150	80	120	220
Madinat Zayed	160	90	-	60	170	200	240
Liwa	220	150	60	-	230	120	300
Ruwais	200	80	170	230	-	30	150
Ghayathi	230	120	200	120	30	-	180
Sila	350	220	240	300	150	180	-
Dalma	-	-	-	-	-	-	-



# The population is widely spread across Al Gharbia's seven main cities with high concentration in Madinat Zayed



- ### Key Regions Coverage
- ▶ Dalma : (islands)
  - ▶ Ghayathi: also includes Bida Al Moutawa
  - ▶ Liwa: includes the eastern and western regions, Muzairaa, Aasab, Sahel, and Tawa Al Arbain
  - ▶ Madinat Zayed: also includes Shamis, Habchan, Bou Hasa, and the Baynouna village
  - ▶ Mirfa: also includes Tureif
  - ▶ Ruwais
  - ▶ Sila: includes Ba'ya and Ghoueyfat

Note (1): Based on the 2001 census, assuming the historical 4% annual growth for Locals and expats in Madinat Zayed, Mirfa, Ruwais and Sila, 0% annual growth for expats in Dalma and Ghayathi, and -15% annual growth for expats in Liwa (due to the agriculture sector decline)

Source: Abu Dhabi National Census 2005

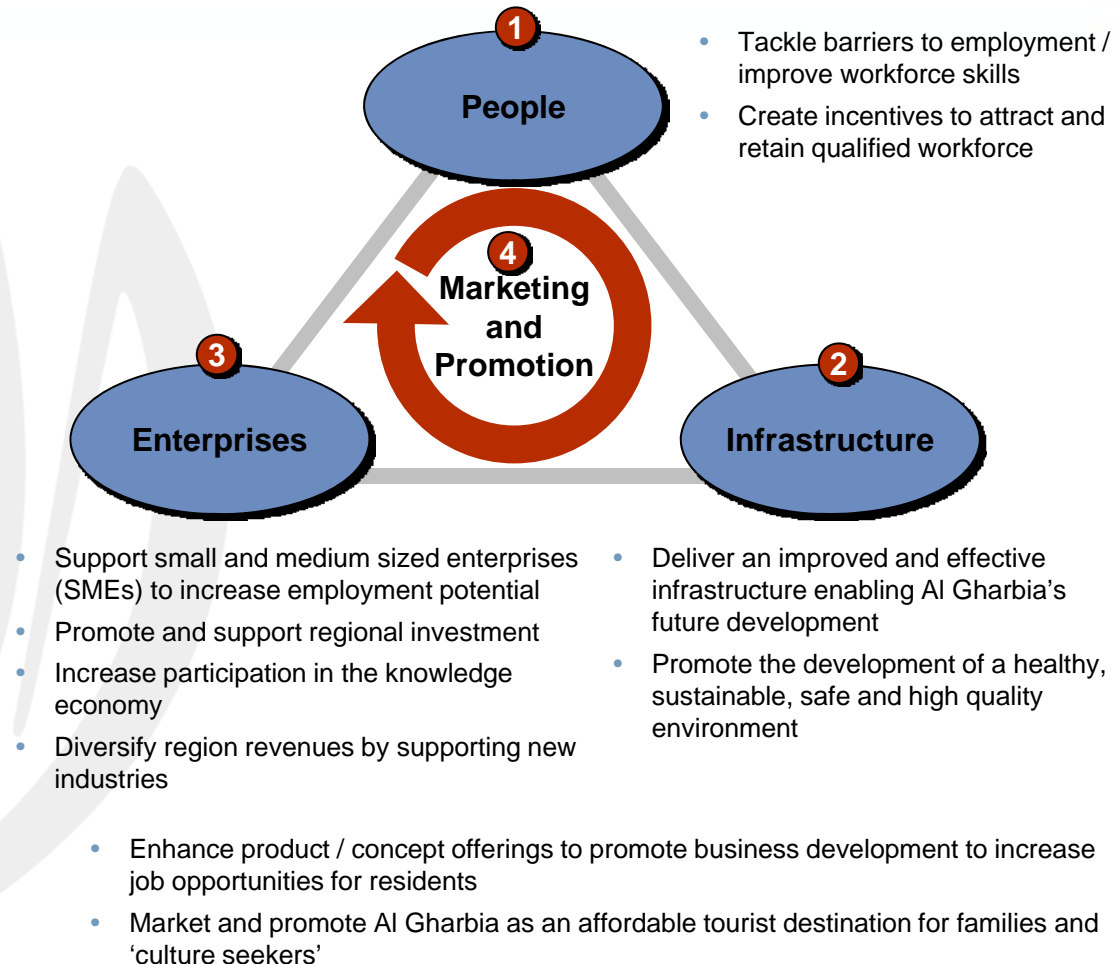
# WRDC as organization has developed its vision, mission and four strategic activities

## WRDC Vision

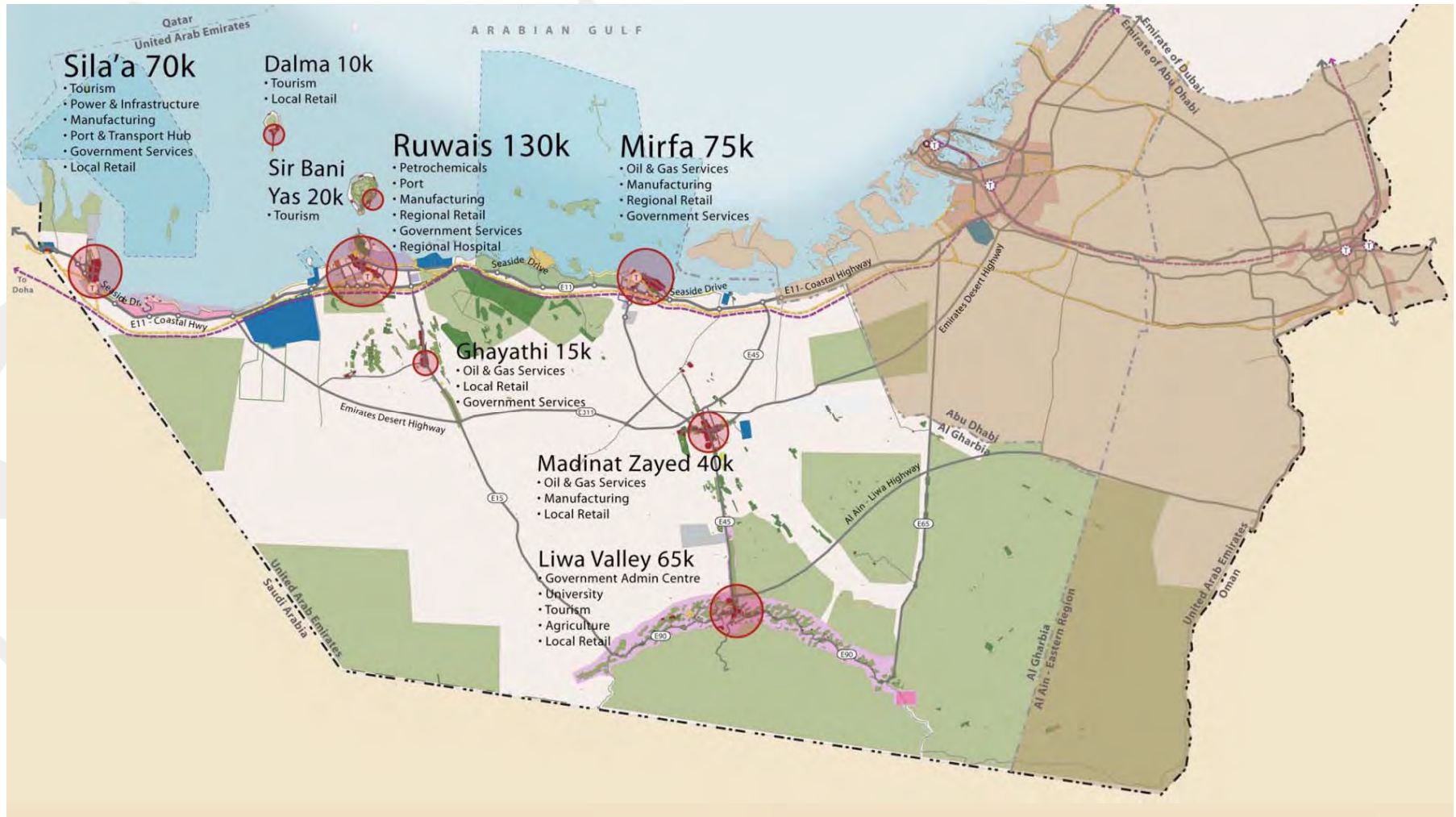
*To lead Al Gharbia of Abu Dhabi into becoming a model of sustainable economic and social development by setting the standard of excellence in the development of people, enhancement of infrastructure and improvement of enterprises.*

## WRDC Mission

*To provide the residents of Al Gharbia with a higher quality of life through promoting employment, improving regional infrastructure and increasing business efficiency and investments.*



# Plan “Al Gharbia 2030”



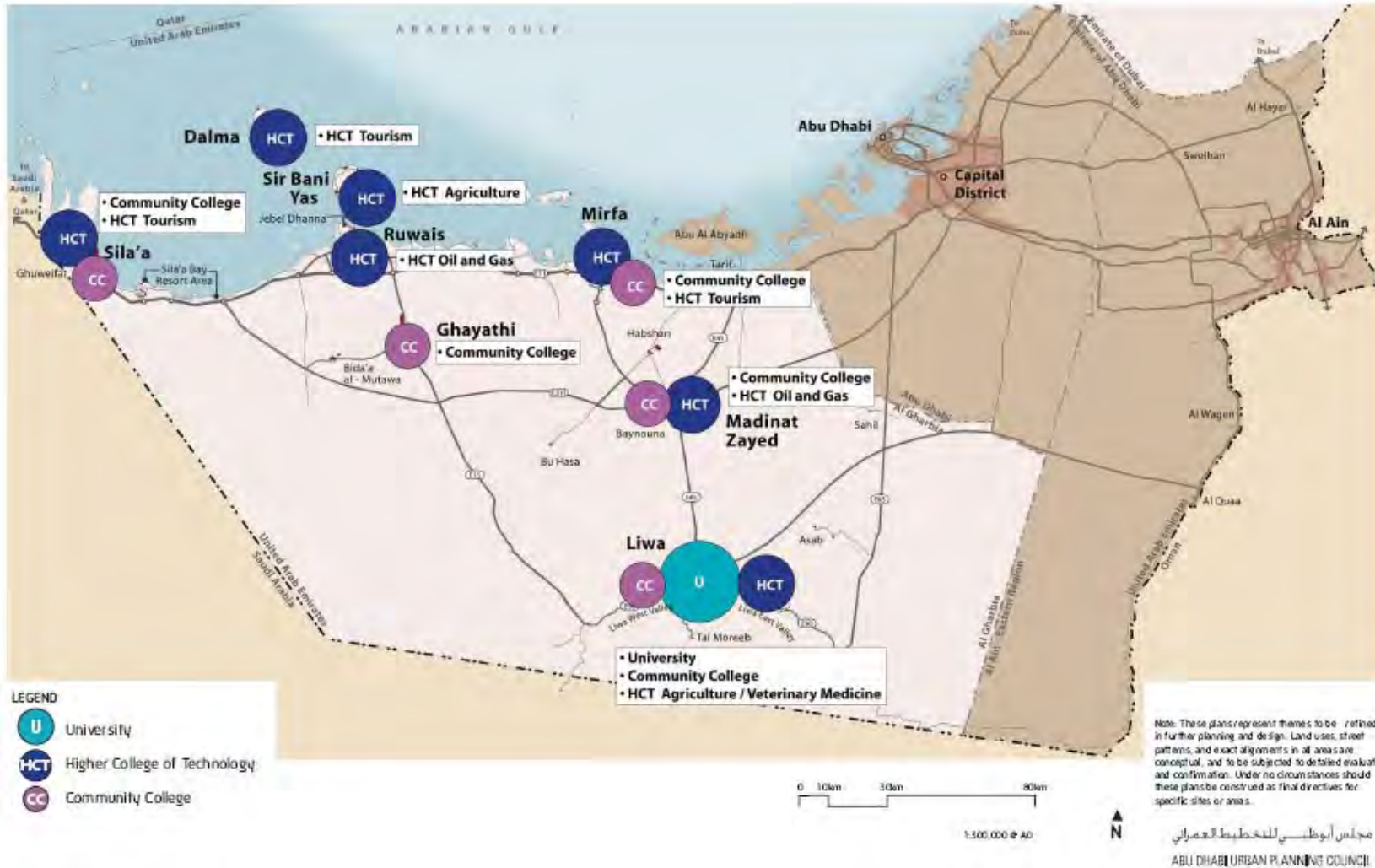


# Regional Transportation Framework

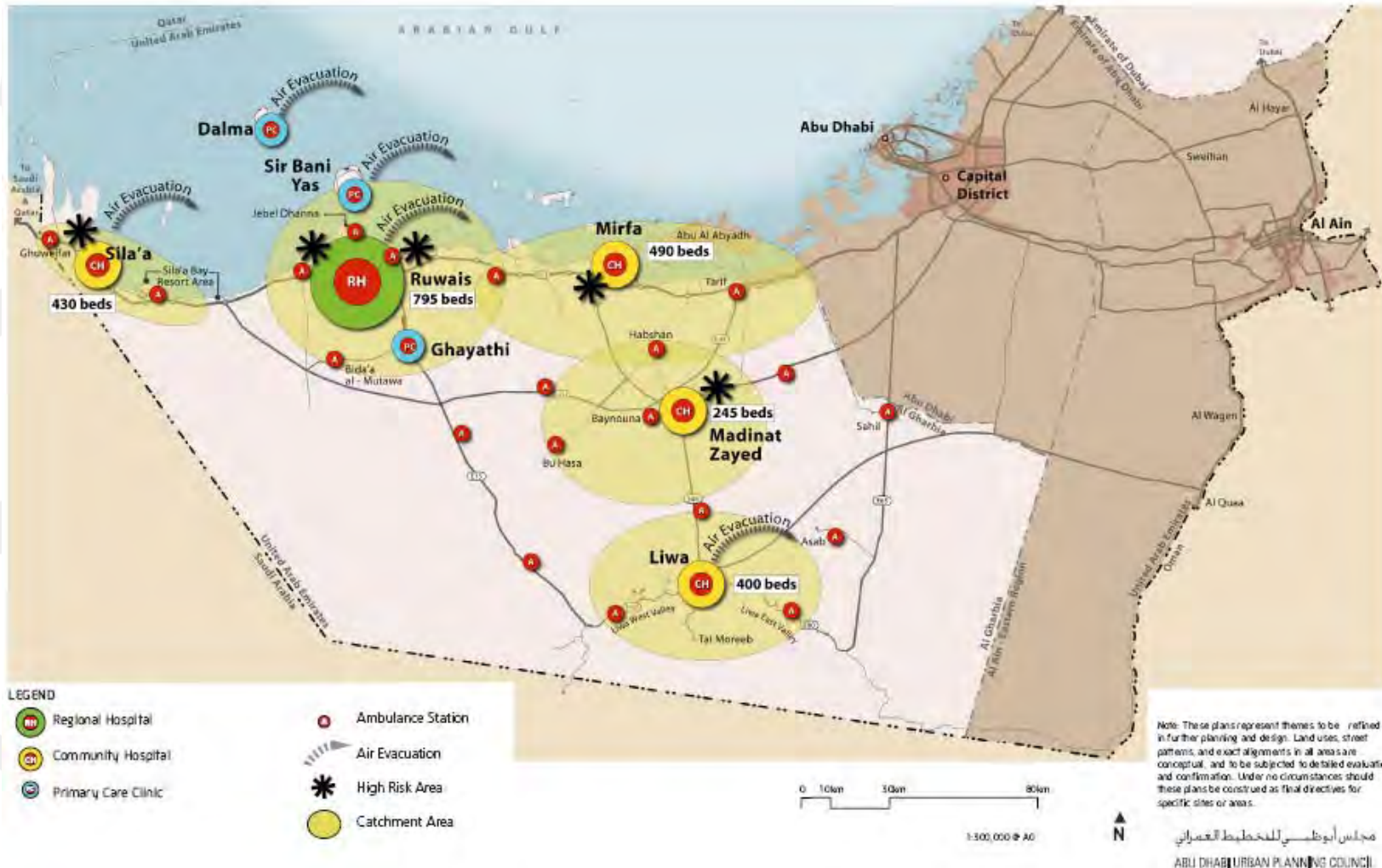




# Regional Education Framework



# Regional Healthcare Framework

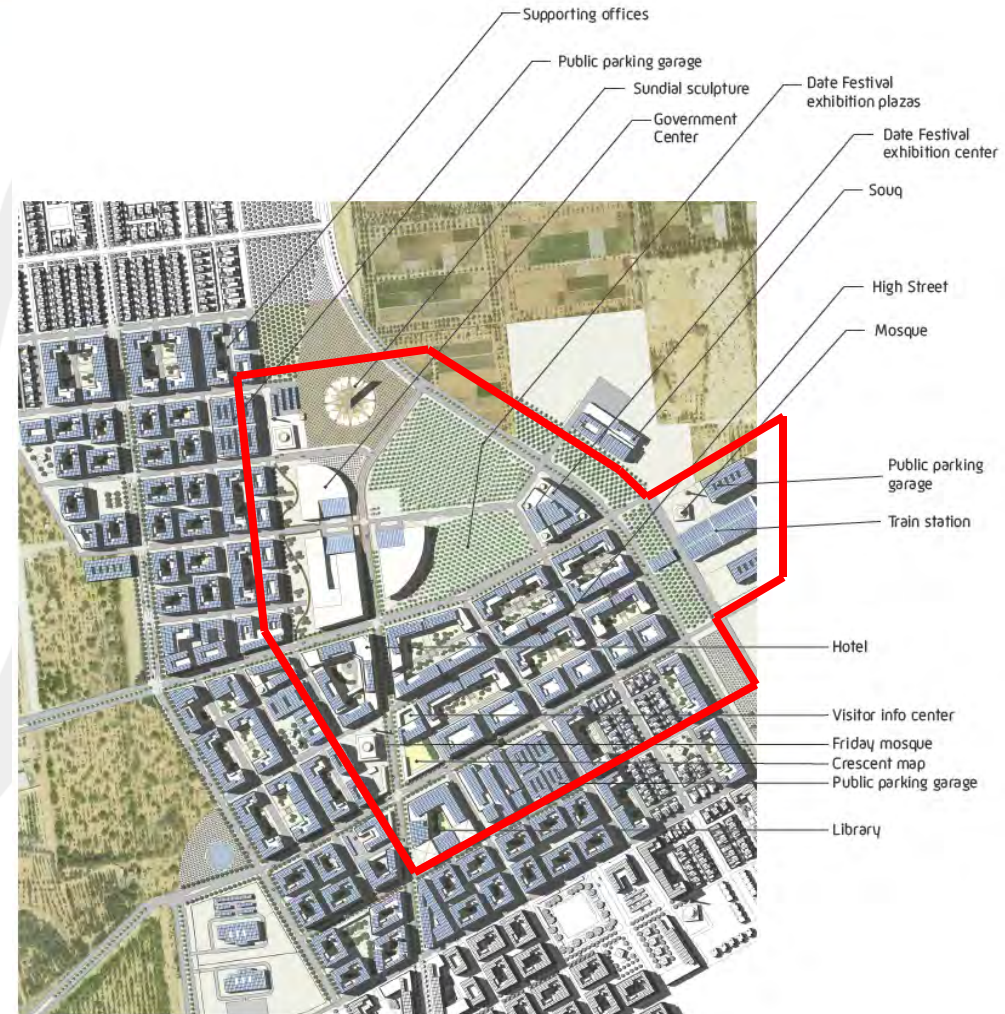
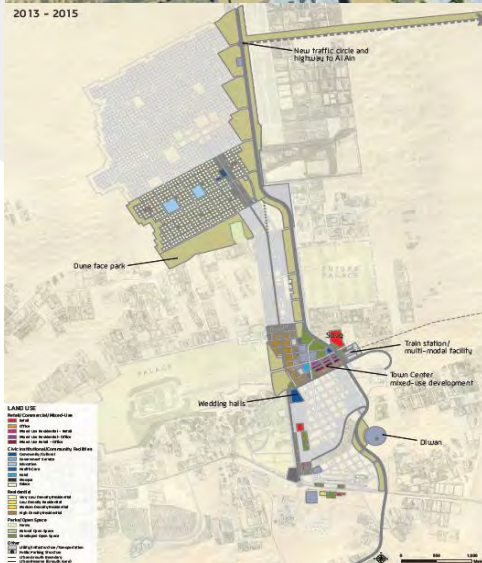




# Liwa Administration Center



2013 - 2015





# Examples for Current plans of major commercial players



- **Increasing refinery capacity, expanding petrochemicals**
  - Several projects of ADNOC group of companies - New Refinery, Green Diesel Plant and Expansion of Sulphur Handling Terminal
  - Borouge 2 completed, Borouge 3 and Borouge 4 in planning
- **Nuclear plant in Braika**
  - Baraka is chosen as the preferred location of the nuclear plant – first in the Middle East. Billions of investment required to satisfy country needs in electricity
- **Expansion and diversification of chemicals production**
  - Plans to create diversified chemicals hub
- **Expansion of water capacity**
  - Shuwaihat Power Station 2 & Shuwaihat Power Station 3 projects
  - Underground water reservoir project near Liwa

## Examples for Current plans of major commercial players



- **Desert Islands project**

- Project includes several island lodges, Equestrian Centre, Dive and Sport Fishing Centre, Youth Outdoor Camp & Anantara Conference Centre.



- **Housing and commercial development**

- Plans to develop residential neighborhoods throughout Al Gharbia
- Schools, parks and commercial markets are parts of development



- **Agriculture & foods**

- The project will help to market Al Gharbia agricultural products, raise the efficiency of the agriculture sector, provide consultation and technical services to improve productivity and water consumption & create additional employment



- **Union Railway**

- Ruwais – Shah railway planned to be build in 2011 - 2013
- Potential next step - railway project linking UAE with other Gulf states (2016)

# How can we help

## Register:

WRDC can assist businesses with the registration with different stakeholders to participate in future projects

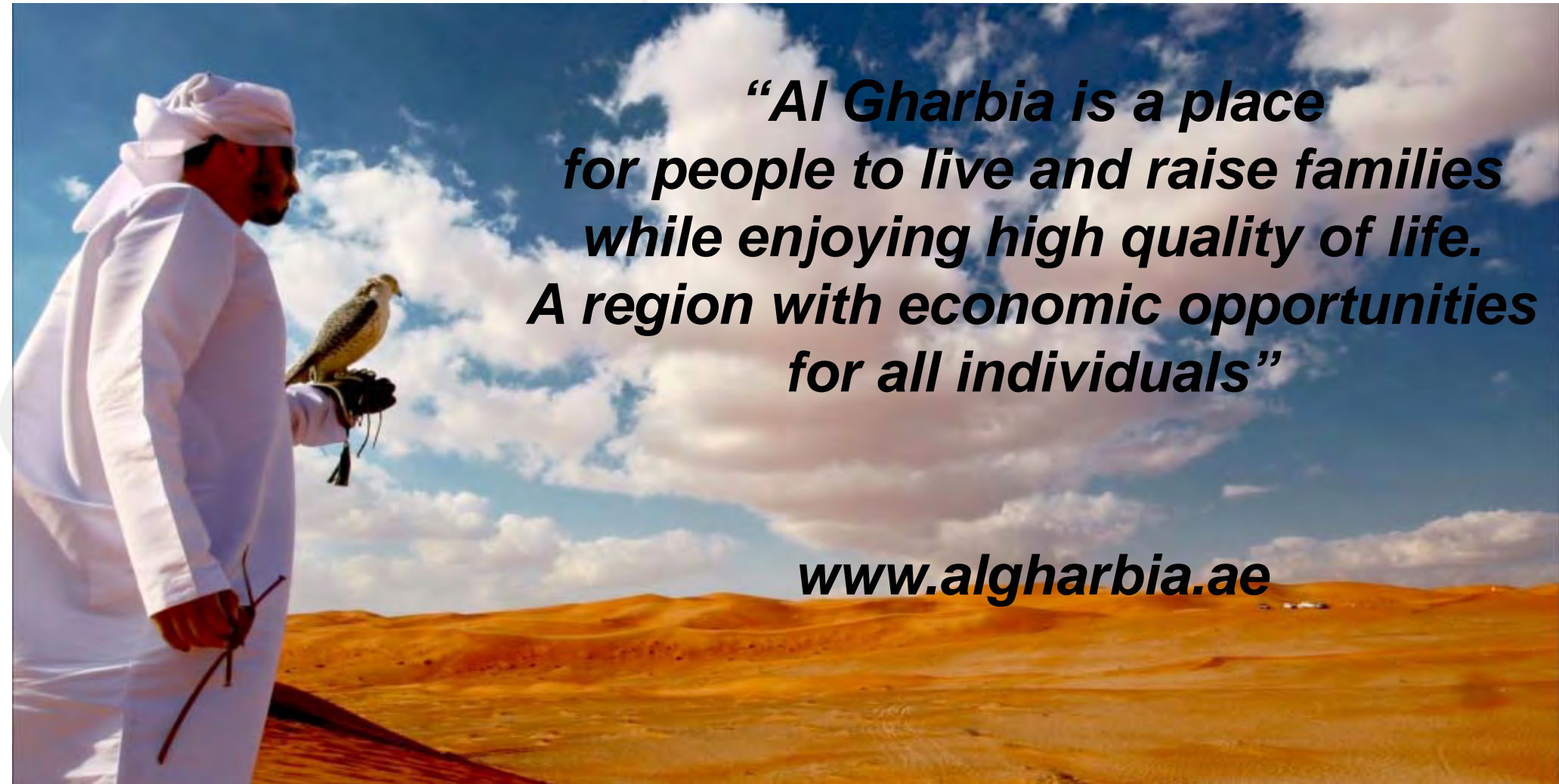
## Bringing Together:

WRDC helps developers and businesses to create a vehicle for new investment opportunities under Al Gharbia 2030 vision.

## Stay in Touch:

WRDC encourage sharing the knowledge and exchanging information about developments and investment opportunities (past and future)





***“Al Gharbia is a place  
for people to live and raise families  
while enjoying high quality of life.  
A region with economic opportunities  
for all individuals”***

***[www.algharbia.ae](http://www.algharbia.ae)***