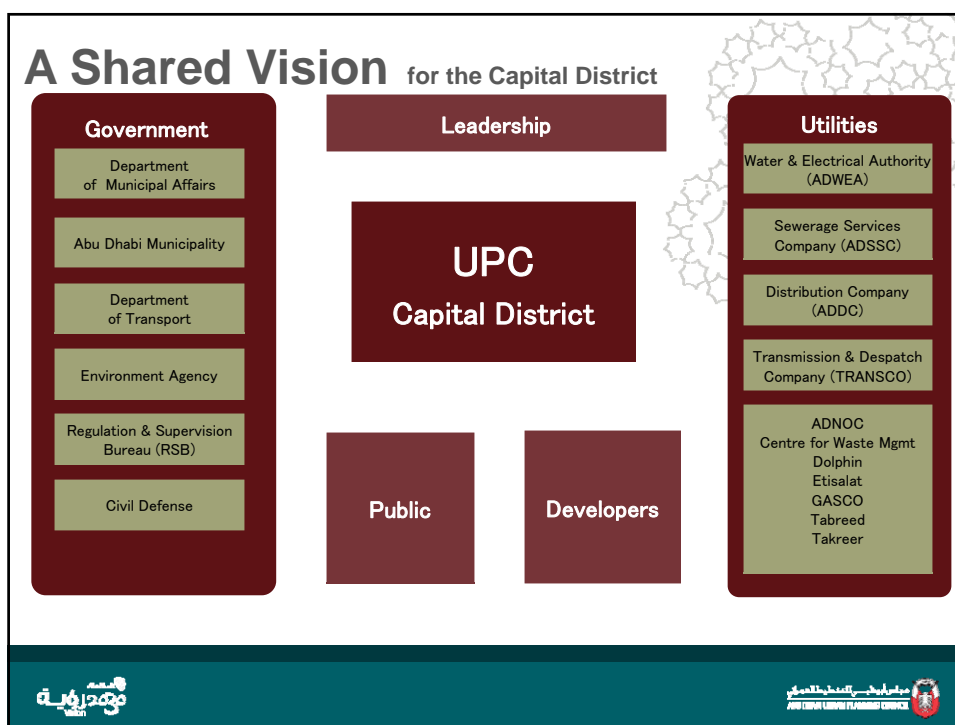




A Shared Vision for the Capital District

- single largest element of Plan Abu Dhabi 2030
- new capital of UAE
- focus for government, academic and knowledge-based institutions
- high priority for government
- a collaborative effort by all government agencies, authorities and utilities


to become the leading sustainable Arab Capital



A Shared Vision for the Capital District



designed and constructed to the highest possible level of sustainability using Estidama and Pearl Rating Programs

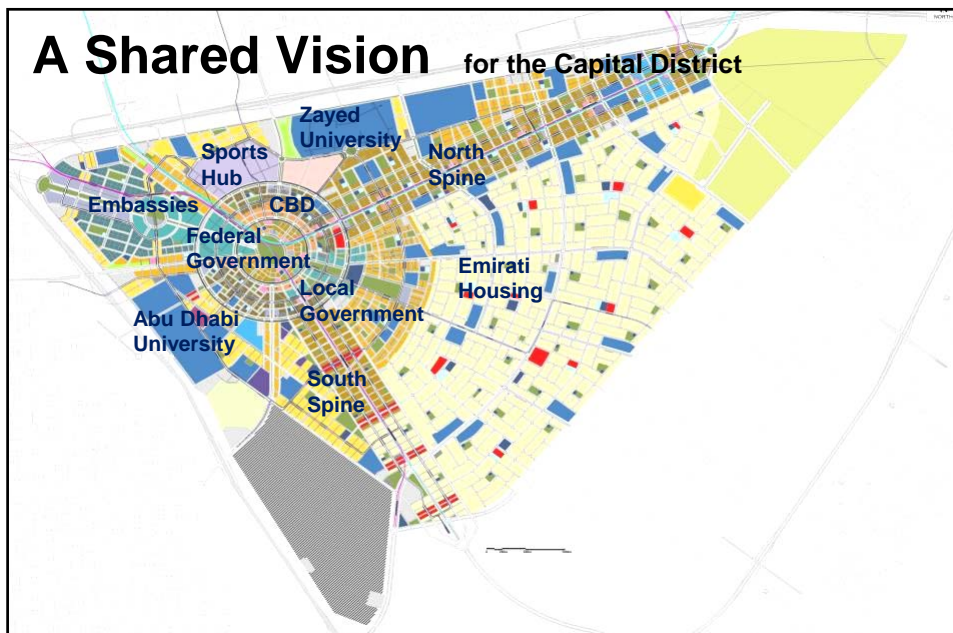
- economic
 - environmental
 - societal
 - cultural
- 
- reduce costs
 - reduce energy, water, and waste
 - improve quality of life
 - preserve heritage and values

to become the leading sustainable Arab Capital

المدينة



A Shared Vision for the Capital District



المدينة



Livable and Modern Arab Capital

- high degree of land-use mix
- neighbourhoods centred around community / public open space
- urban form responsive to culture and climate of Abu Dhabi



المدينة الحديثة

المدينة الحديثة
ABU DHABI
المدينة الحديثة

Global Capital

- urban structure reinforces symbolic axes and creates an identifiable national government precinct
- a safe and pedestrian friendly Federal Precinct with national government buildings, institutions monuments and foreign embassies



المدينة الحديثة

المدينة الحديثة
ABU DHABI
المدينة الحديثة

Transit- and Pedestrian Oriented Communities

- fully-integrated transportation system:
 - metro, regional rail, trams, buses, vehicles, bikes
- multi-modal transit hub integrated with development
- over 80% of residents within 400m of transit
- streets designed for pedestrians, transit passengers, vehicles and cyclists

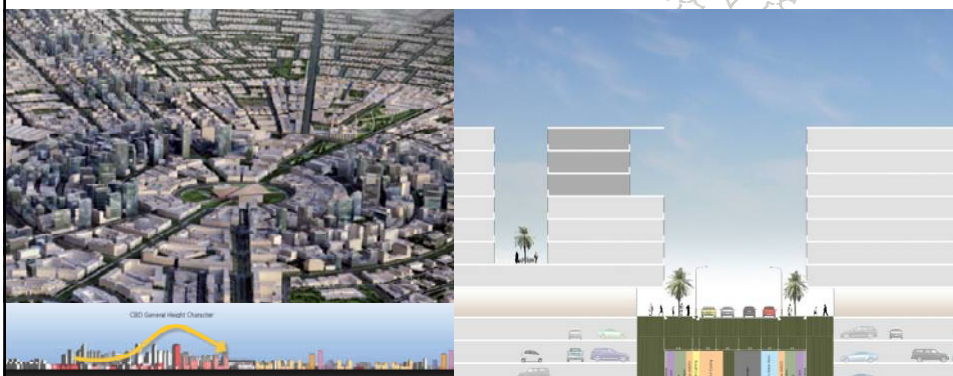


مؤسسة
البحرين

مؤسسة
البحرين

High Quality Development Opportunities

- development parcels designed to maximize value
- building heights in the Central Business District up to 150m
- more efficient service corridor design with some utilities under roadway
- narrower streets for better shading, pedestrian comfort and development efficiency

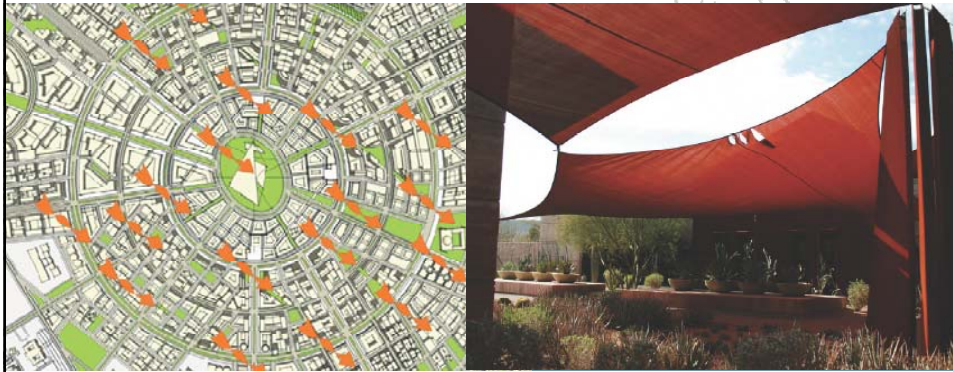


مؤسسة
البحرين

مؤسسة
البحرين

Sustainable Urbanism

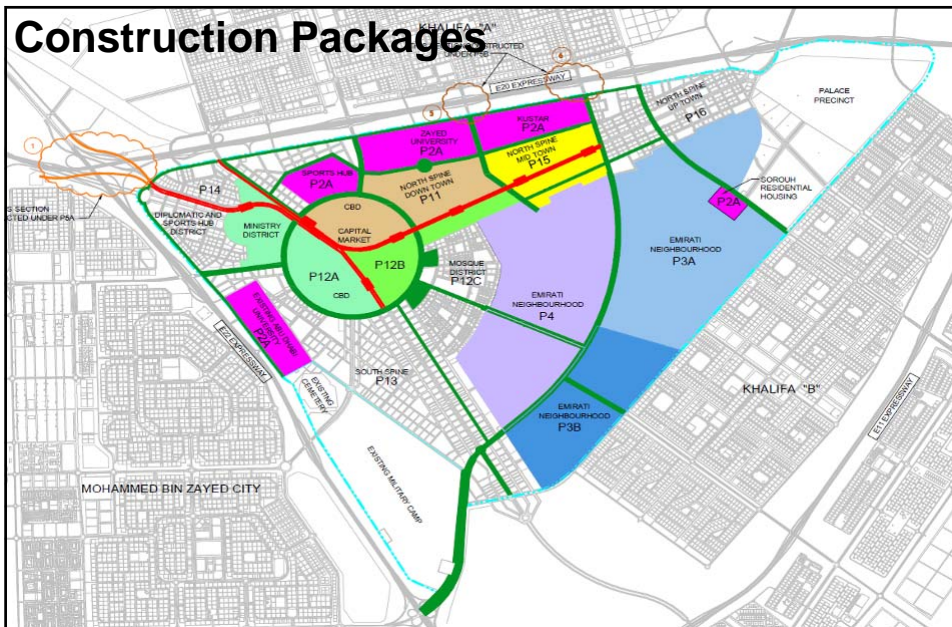
- buildings, streets and open spaces designed to maximize shade and wind flow
- design guidelines require shading devices such as trees, canopies and arcades
- all buildings built to Estidama Pearl ratings



مؤسسة
استدامة

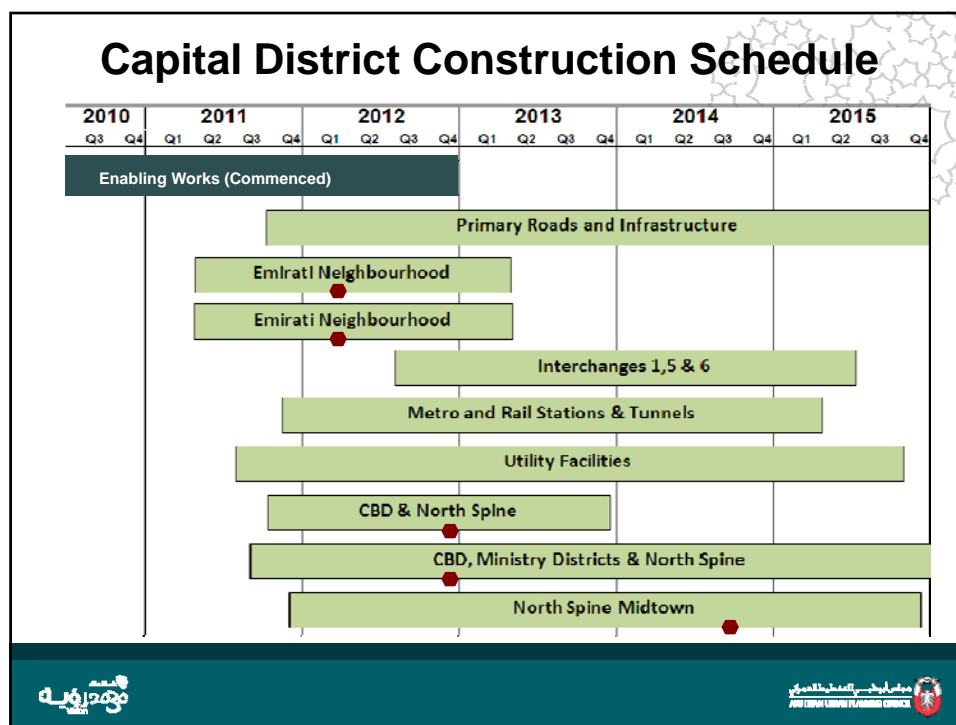


Construction Packages



مؤسسة
استدامة





Infrastructure Facts

public realm	10,000,000	m ²
water and irrigation pipes	2000	km
rainwater and sewer pipes	1000	km
power substations	900	
telecommunication ducts	800	km
gas pipes	700	km
high voltage power cables	500	km
local roads	400	km
main roads	60	km

Current Contracts

Infrastructure Project Management	AECOM
Environmental Study - air monitoring, habitat & tree surveys	GHD
Enabling Works - site perimeter security/demarcation berms, haul roads, removal of abandoned facilities	Tristar
Topographical Survey	Capital Surveys
Intelligent Transportation System Study	Scott Wilson
Solid Waste Management Strategy Study	WSP
Emirati Neighborhood Design	Mouchel
Emirati Neighborhood Design	Hyder
Asset Management Framework	WS Atkins
District Cooling Framework	Hoare Lee
Ground Improvement Trials	Soletanche Bachy
Geotechnical Investigations	Spektra
Enabling Works Supervision Services	Hyder
South Spine Master Plan	HOK

مؤسسة
البنية التحتية



Project Photos



Post Compaction Testing in Trial Area A- Measuring Level of Ground Improvement using Pressure Meter Machine



Beams and Blocks for Zone Load test in Trial Area B



Preparing 3/3m base for Zone Load test in Trial Area B




Ground improvement field trials - Rapid Impact Compaction Rig

13

مؤسسة
البنية التحتية





Ground improvement field trials (Part 1). Recording data during the Geophysical Survey (Inset)

Geotechnical ground investigation in progress. Packer/Lugeon Test Equipment (Inset)


Preliminary design documents for Emirati Neighbourhood package 3B being received by AECOM Design Managers

Emirati Neighbourhood package 3B preliminary design Submissions

15

المجلس التنفيذي
الإمارة الشمالية

المجلس التنفيذي
الإمارة الشمالية



Cone Penetration Testing Machine in operation

Interior of the Cone Penetration Testing Machine

Dynamic Sand Columns

Geotechnical ground investigation - Bore Hole in Emirati Neighbourhood Package 3 Area

المجلس التنفيذي
الإمارة الشمالية

المجلس التنفيذي
الإمارة الشمالية

